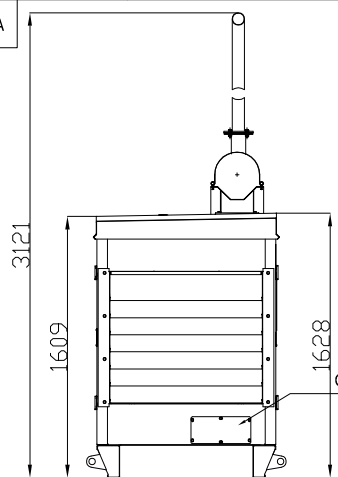
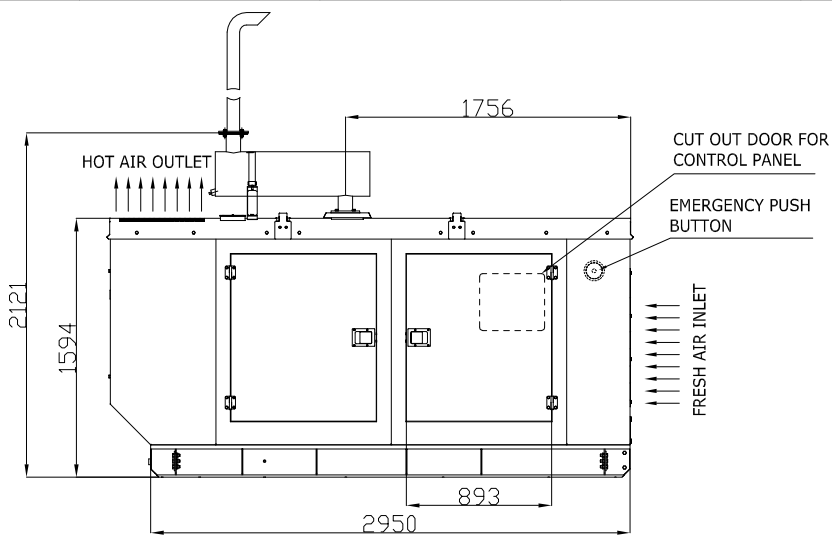


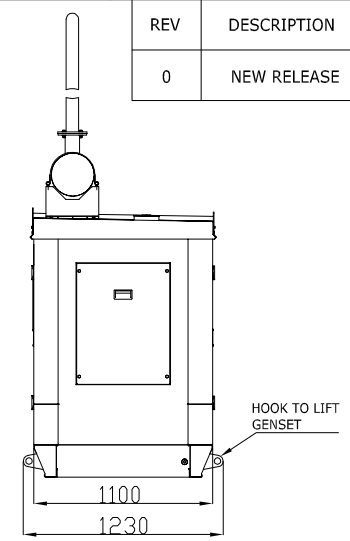
REV	DESCRIPTION
0	NEW RELEASE



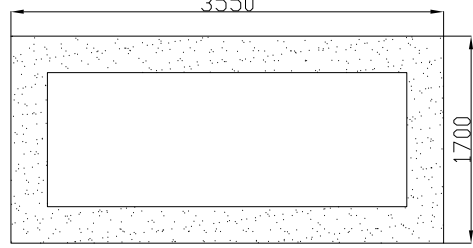
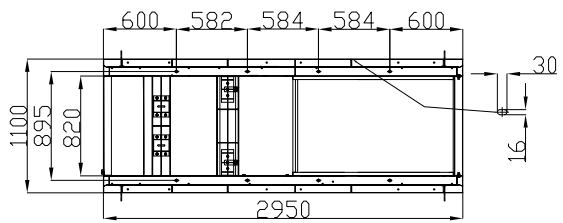
VIEW FROM ALT SIDE



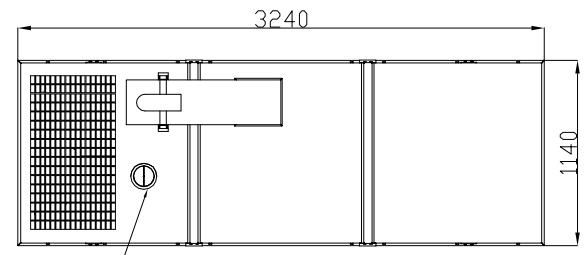
VIEW FROM STARTER SIDE



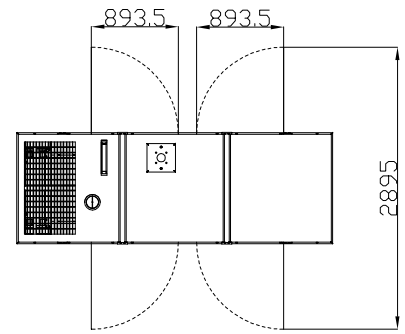
VIEW FROM GEAR SIDE



FOUNDATION DRAWING



VIEW FROM TOP



INSTALLATION PLAN FOR OPEN DOOR

- NOTES:**
1. FUEL TANK CAPACITY: 150 LITRES.
 2. HEIGHT OF FOUNDATION ABOVE FFL CAN BE MODIFIED DEPENDING UPON WATER STAGNATION.
 3. DEPTH BELOW FFL DEPEND UPON THE SOIL CONDITION.
 4. APPROX DEPTH BELOW FFL = 500MM.
 5. PPC OR RCC SHALL BE BASED ON SOIL CONDITION.
 6. LENGTH OF THE GENSET = 3240MM (10.62ft).
 7. WIDTH OF THE GENSET = 1140MM (3.74ft).
 8. HEIGHT OF THE GENSET = 3121MM (10.23ft).

PRINTS OF PREVIOUS REVISION NO. SHOULD BE SCRAPPED

THIS DRAWING IS PROPERTY OF KIRLOSKAR OIL ENGINES LTD. AND MUST BE RETURNED ON REQUEST. IT IS SUBMITTED AS CONFIDENTIAL INFORMATION WITH OUR ENDORSEMENT, TENDER, ORDER OR CONTRACT NO. IT IS NOT TO BE ISSUED FOR ANY OTHER PURPOSE OR ORDER NOR MAY BE COPIED OR LENT WITHOUT OUR AUTHORITY IN WRITING.

FORMAT No:RAE/FORM/ISS REFER DCP No. RAE 44/202

UNLESS OTHERWISE SPECIFIED ALL DIMENSIONS ARE IN MM. * SURFACE FINISH AS PER CO. STANDARD. UNMENTIONED TOLERANCES AS PER CO. STANDARD. REMOVE ALL SHARP BURRS AND SHARP EDGES. DRAWING NOT TO BE SCALED.		CAD DRG FILE:-		CASTING/FORGING DRG. NO.	
WATER TREATMENT :-		HEAT TREATMENT :-		WEIGHT (KGS) :-	
IRN		TITLE		TYPE 4R1040TA	
CHD.		4RTA GENSET LAYOUT		SCALE	
APPD.		82.5 KVA		SHT. NO.	
DATE		UNMENTIONED		DRAWING NO.	
RADII		SUNBEAM GENERATOR, PVT. LTD		PONDICHERRY	
CHAMFER		DRAWING NO.		SBG/GA-FND-82.5KVA	
UNDERCUT					

No.	REVISION	ZONE	MODIFIED BY	REF. No.	DATE	No.	REVISION	ZONE	MODIFIED BY	REF. No.	DATE